



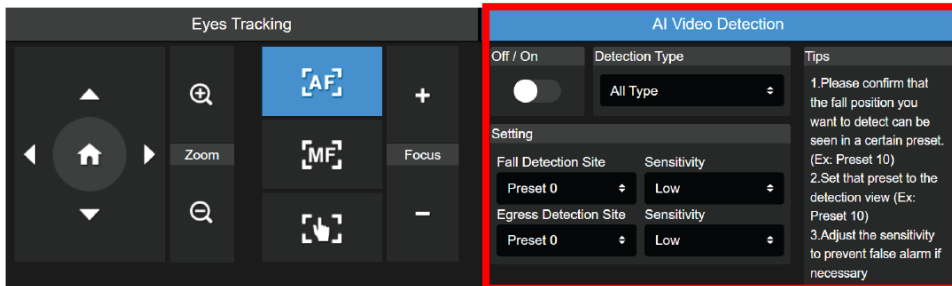
MD120UI Release note

Product : MD120UI

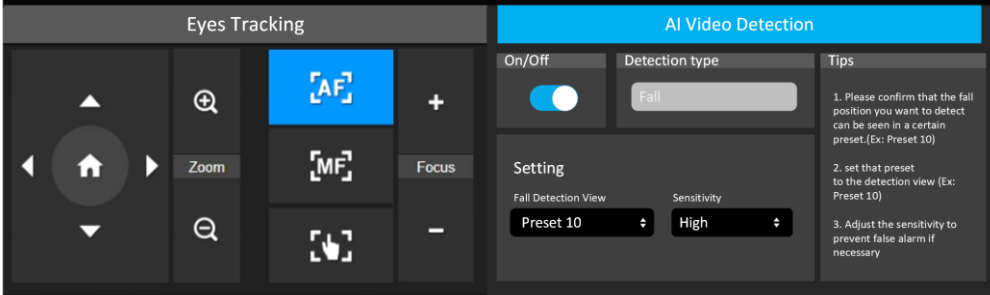
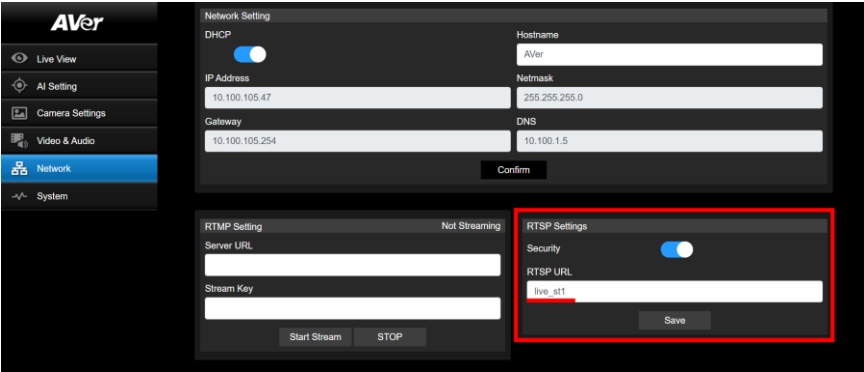
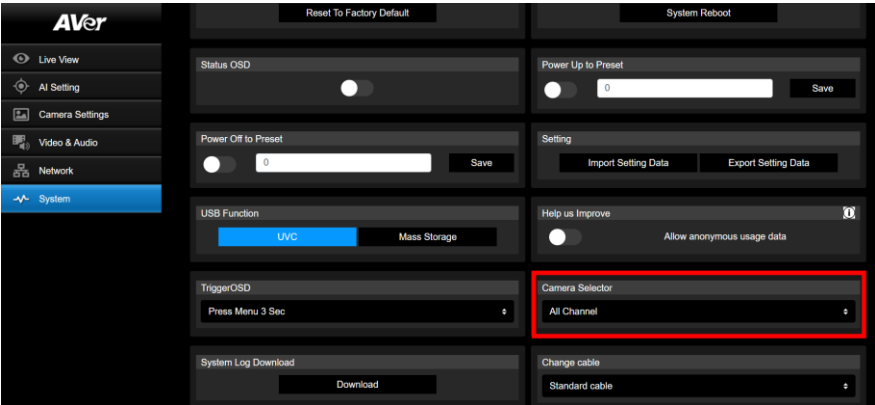
Tips

1. You need to press and hold [Menu] button for 3 sec on the RC to trigger OSD

FW version	1.1.1018.0
Release date	2025/8/12
Checksum	543b1585fd0263dd830f35fdc7f03 (MD5)
New feature	<ol style="list-style-type: none">1. Support DIS (Digital image stability) DIS can reduces camera shake, but result in lower FPS(ie: 4K/60 will be reduced to 4K/30), narrower FOV, and occasional image jitter or distortion in certain scenarios.2. Support new remote control (white one) with more features ie. focus/flip/mirror/IR night vision control3. HDMI output now can contain the sound been pickup by microphone on MD120UI Select whether to include microphone audio in the HDMI output
Improvement	<ol style="list-style-type: none">1. Fixed the issue where the Zoom Speed would increase when using the remote control2. Add [color mode] option for some DVI monitors
Known issue	- Changing the streaming resolution during RTMP streaming may cause issues.

FW version	1.1.1013.0
Release date	2024/6/28
Checksum	387f6ff034319788b4223d5f85b8def9 (MD5)
New feature	<ol style="list-style-type: none">3. Add Egress Detection feature. The setting method is the same as Fall Detection on WEB UI and able to send alarm events. AI Video Detection  The screenshot shows two parts of the remote control's OSD menu. On the left, the 'Eyes Tracking' menu has buttons for AF (Auto Focus), MF (Manual Focus), and a hand icon for tracking. On the right, the 'AI Video Detection' menu is shown with a red border. It includes an 'Off / On' toggle, a 'Detection Type' dropdown set to 'All Type', and a 'Setting' section with two rows: 'Fall Detection Site' and 'Egress Detection Site', each with a 'Sensitivity' dropdown set to 'Low'. A 'Tips' section on the far right provides instructions: 1. Please confirm that the fall position you want to detect can be seen in a certain preset. (Ex: Preset 10) 2. Set that preset to the detection view (Ex: Preset 10) 3. Adjust the sensitivity to prevent false alarm if necessary.4. Passwords need to be more complex to comply with cybersecurity trends (Product Security and Telecommunications Infrastructure Act , PSTI)

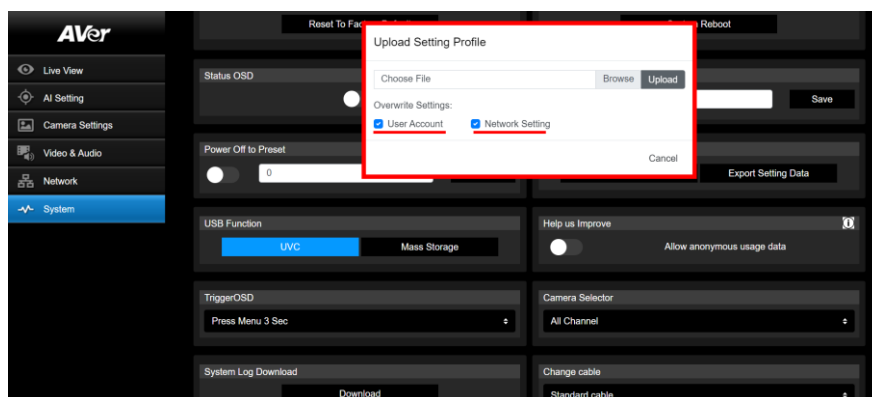
	<div>Change the username and password before logging in to the web interface.</div> <ul style="list-style-type: none">● Username: Use 1-32 characters.● Password: Use 8-32 characters and a combination of uppercase letters, lowercase letters, numbers, and symbols (%+=, - ^/ @. ~). The password cannot be the same as the username. <p>** when an existing customer has set Account:1 and Pass:1(which not fit the new rule) , the account password will remain 1,1 after updating the FW. But after set the camera to default, it will be required to comply with the new password rule.</p>
Improvement	<ol style="list-style-type: none">1. Fix the issue that may cause camera offline temporary in some use case2. Change the IR Night Vision setting to [Auto] and Sensitivity [Middle]3. Some improvement to improve stability
Known issue	-

FW version	1.1.1012.0
Release date	2023/12/25
Checksum	d812115a909a3c0d651755bfd745c1ac
New feature	<p>5. Support AI Fall Detection</p> <p>WebUI >> AI >> AI Setting >> AI Video Detection</p> <p>when fall been detected in the FOV , MD120UI would trigger an event via network , this event can be received by AVer ViewCare or third-party SW which supported.</p>  <p>6. Support Custom RTSP Settings</p> <p>WebUI >> Network >> RTSP Settings</p> <p>RTSP Sample : rtsp://account:passwd@device_ip/rtsp_url</p>  <p>7. Support PELCO-D & PELCO-P Camera Control Protocol (RS-232)</p> <p>8. Now you can set the camera RC channel on WEB UI</p> <p>WebUI >> System >> Camera Selector</p>  <p>9. Support mosaic (pixelated) on face in RTSP for Privacy</p> <p>The camera can now auto detect "Faces" in the view and mosaic on RTSP</p> <p>WebUI >> Video & Audio >> Mosaic on Stream >> Full face</p> <p>**all ports would with Mosaic when enable and select 4K video streaming</p>

10. Support more options to overwrite the setting when Importing Setting Data

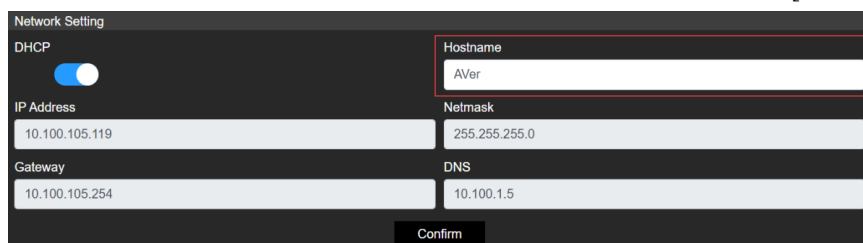
WebUI >> System >> Setting >> Import Setting Data

Check the [User Account] , [Network Setting] if you want to overwrite



11. Support Hostname on MSFT DNS server for better device management

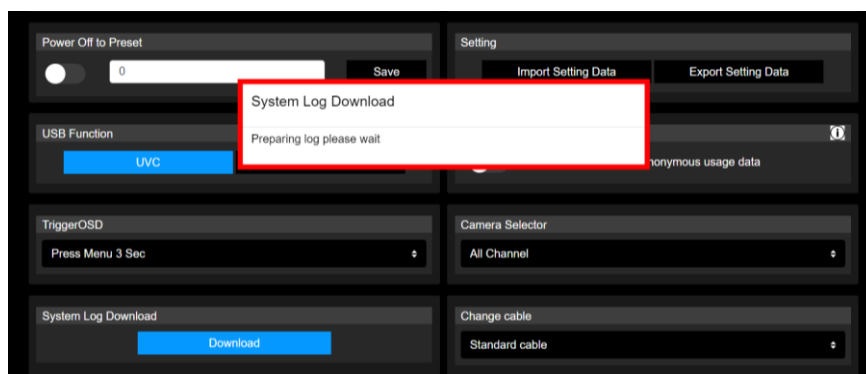
web UI >>> Network >>> Hostname, set the camera hostname and click [Confirm]



Improvement

1. Remove BETA function(AI Alert Detection)
2. Improve AI Tracking stability and accuracy
3. Improve AF(Auto Focus) in IR Night Vision
4. Fixed UI issue on some browser setting
5. Optimize user flow when download log

A prompt window will pop up when the UI is temporarily frozen due to downloading logs.



Known issue

-

Release note

Product : MD120UI

****You need to press and hold [Menu] button on the RC to trigger OSD**

****AI Alert Detection is a BETA Function**

FW version	1.1.1008.0
Release date	2023/9/1
New feature	1. Camera ops change to improve usability. Camera would be set to AF after enable Eyes Tracking or AI function
Improvement	4. Improve AI Tracking and AF stability and accuracy. 5. Improve AF in IR Night Mode. 6. Improve system stability in long run.
Known issue	1. Under certain browser settings, the proportions of web UI might be distorted (does not affect operation.)